

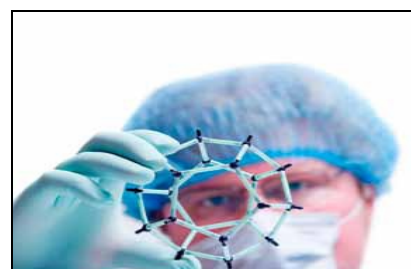
TRADE MISSION BIOJAPAN 2010 WORLD BUSINESS FORUM

Deadline: August 13, 2010

**WHEN: SEPT. 29 - OCT. 1, 2010
WHERE: YOKOHAMA, JAPAN**

**ENDORSED BY THE MISSOURI BIOTECHNOLOGY ASSOCIATION AND
IN PARTNERSHIP WITH THE MISSOURI DEPARTMENT OF
ECONOMIC DEVELOPMENT AND MISSOURI
TECHNOLOGY CORPORATION.**

The Missouri Department of Economic Development is organizing a Japan Trade Mission Delegation to participate in BioJapan 2010 World Business Forum in Yokohama from September 29-October 1, 2010. The Japanese government predicts that its biotechnology market will reach \$275 billion by the year 2010 and have created at least 1000 new bio-based companies. The Department is recruiting Missouri companies, organizations and entities involved in the following markets:



- ag-biotech & plant sciences
- animal health & nutrition
- biomaterials
- biotechnology
- business incubators
- contract research & manufacturing
- economic development
- energy technologies
- functional foods
- innovation centers
- medical & biotech equipment
- medical devices
- pharmaceutical
- renewable energy
- research facilities
- research & technology parks

The trade mission provides a unique opportunity for those interested in doing business in Japan and for anyone interested in pursuing strategic alliances and collaborations with Japanese firms. Please contact Jessica Eads or Krista Zurkamer for further information or to sign up today.

Participation Fee: \$1100

MISSOURI
Department of Economic Development

**CONTACT: JESSICA EADS OR
KRISTA ZURKAMER**

301 W. High Street, Ste 720
P.O. Box 118
Jefferson City, MO 65102
Phone: 573-751-6728
Fax: 573-526-1567
E-mail: jessica.eads@ded.mo.gov
or krista.zurkamer@ded.mo.gov

PRICE INCLUDES:

- BioJapan 2010 Registration
- Exhibition
- Seminars
- Presentations
- Workshops
- Networking Receptions
- Exhibitor Mini-Catalog
- One-on-One Company Meetings
- Transportation Assistance
- Lodging Reservation Assistance
- Japanese Business Protocol
- Market Research
- Japanese Company Briefings
- Agent/Distributor Search
- Mission Briefing
- Interpretation Services

*Airfare, lodging, transportation, some meals and incidentals costs are the responsibility of the participant. Assistance available upon request.